



BLACKPIGEON **STUDIOS**

PRODUCER PACKET

Optimized for Production Companies
For In-Studio Rentals and On-Location Support
bookings@blackpigeonstudios.com

**LEGEND**

What Black Pigeon Offers.....(see below)

Overhead Layouts.....page 3

Building Amenities.....page 4

Pricing: Hourly, Daily, Weekly.....pg 5-6

Preferred Crew Members.....page 6

In-House Production Supplies.....page 7

In-House Grip, Electric, and Camera Equipment.....page 7

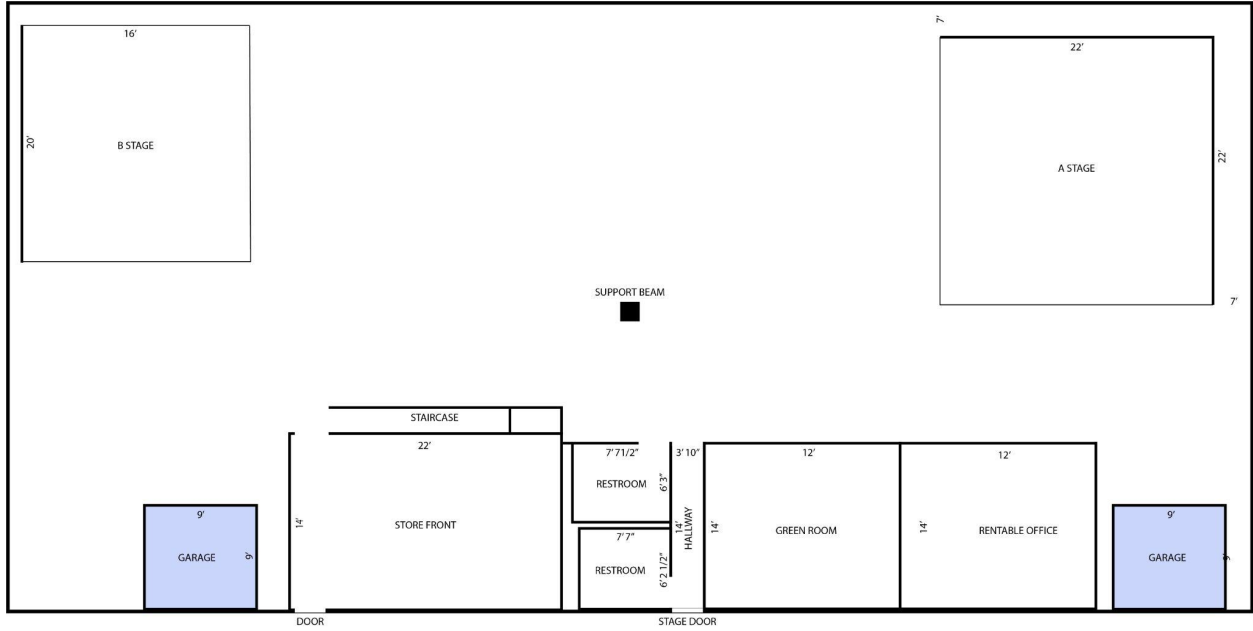
Preferred Vendors.....page 7

WHAT BLACK PIGEON HAS TO OFFER

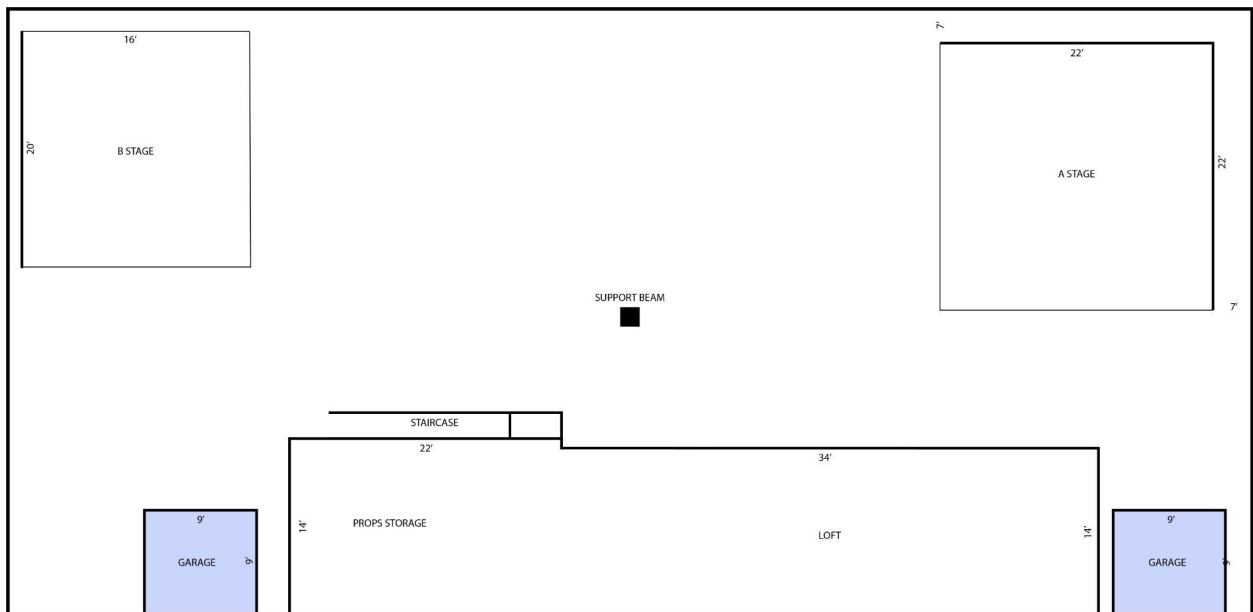
Our 6,000 sqft. rentable studio space is equipped with two cyclorama walls on opposite ends of the facility. (see pg. 3) Above each wall, we have an overhead grid to rig your choice of lighting and prop fixtures (by request). A green room/flex space is included in all bookings that gives talent and vanities a quiet space to complete their work. In addition to the spaces, we have an inventory of production supplies, grip and electric, and props (see pg. 7) available for rental in or out of the studio. Our floor plan is set up to accommodate custom set builds. Our middle space (see pg. 3) is available for free-standing construction projects/set builds, and the workshop is ready for any of your construction needs. The space is available to rent in its entirety if your project calls for the use of both stages and the middle section. Black Pigeon’s staff of freelance professionals (see pg. 6) are here to help you find your crew, your gear, and your space. More than a studio, Black Pigeon is a community of creatives ready to help in the ever-growing Grand Rapids market.



OVERHEAD LAYOUT: FULL FACILITY



OVERHEAD LAYOUT: LOFT ABOVE OFFICE SPACES





FACILITY AMENITIES

Green Room - Our Green Room space is a quiet, comfortable room where talent and vanities can do their work. A changing bathroom is located across the hallway.

Workshop - Our Workshop is a fully functional construction and repair space with power tools and solutions for any of your construction and repair needs. (materials not included)

Loft/Lounge Area - The Loft is designed for clients and agency or production associates to settle in and watch your project on the A Stage come to life. It is equipped with couches and working desk space.

2 Bathrooms - There are two bathrooms located next to the hallway in the middle of the building. Both are fully finished and stocked at all times.

Office Space - We have an office space near our A Stage (available for lease) for a quiet place to work equipped with a printer and network connection.

2 Garage Doors - 9 ft tall, 9 ft wide. Located on each end of the building.

OVERHEAD GRID, RIGGING INFORMATION

Our Facility is equipped with an overhead grid above each stage and can install a grid on demand wherever needed on the floor. For additional rigging requests, please contact bookings@blackpigeonstudios.com

A Stage - 20'x20' over stage floor

B Stage - 24'x16' over stage floor

Open Area - Grid and Truss On Demand Available

ELECTRICAL INFORMATION

Our Facility's Electrical Service Box has the current specs:

120/208V, 150A MAX, 20A Circuit Distro. (More Coming Soon)

For additional electrical requests, please contact bookings@blackpigeonstudios.com

A Stage - 4 Circuits within 50' of stage floor

B Stage - 6 Circuits within 50' of stage floor

PARKING INFORMATION

20 parking spaces available in front of the Studio and right along the side of the building to the back.



Black Pigeon's Pricing strategy looks to keep our facility affordable to young creatives, narrative projects, and small production companies, while also having the resources to cater to larger projects. If you have a special situation that isn't clear in the pricing sheet, please contact bookings@blackpigeonstudios.com

Hourly pricing requires a 2-hour minimum. Daily pricing is per 10 hours. Weekly pricing is per a consecutive 5-days

PRICING: "A" STAGE

Pricing Includes Access to our A Stage as well as our Facilities and Green Room. Pricing does not include lighting fixtures, properties, grip support, or workshop access.

\$125.00/hour

\$750.00/daily

\$2,500.00/weekly

PRICING: "B" STAGE

Pricing Includes Access to our B Stage as well as our Facilities and Green Room. Pricing does not include lighting fixtures, properties, grip support, or workshop access.

\$65.00/hour

\$400.00/daily

\$1,500.00/weekly

PRICING: ENTIRE STUDIO SPACE

Pricing Includes Access to our Entire Studio Space, including the open space to build, our Workshop, as well as our Facilities and Green Room. Pricing does not include lighting fixtures, properties, or grip support.

\$150.00/hour

\$900.00/daily

\$3,000.00/weekly

PRICING: FACILITIES ACCESS (No Stages)

Pricing Includes, the open space to build, our Workshop, as well as our Facilities and Green Room. Pricing does not include any access to the overhead grid, stages, lighting fixtures, properties, or grip support.

\$100.00/hour

\$600.00/daily

\$2,000.00/weekly

PRICING: LED TUNNEL

Pricing Includes Access to our LED Tunnel Set as well as our Facilities and Green Room. Pricing does not include lighting fixtures, properties, grip support, or workshop access.

\$65.00/hour

\$400.00/daily

\$1,500.00/weekly

**PRICING: EVENTS***

Pricing Includes Access to our Open Studio Space for your event, and one of our stages if you plan to host a speech, as well as our Facilities. Pricing does not include tables, chairs, lighting fixtures, access to our workshop, properties, or grip support.

\$165.00/hour

\$1,000.00/daily

\$3,250.00/weekly

*Events subject to approval by our studio staff.

PRICING: CUSTOM SET CONSTRUCTION

The Black Pigeon Team has expanded to include individuals who are skilled in the set construction, set decoration, and production design departments.

If your project is looking for a custom set, we have the workshop and the facilities to make that a reality. Contact bookings@blackpigeonstudios.com for more information.

PRICING: PROJECT-BASED FEES

5.0%	Insurance Requirement Waiver Fee	Allows Black Pigeon to provide insurance for bookings that may not have access.
\$300.00	Color Painting Fee - A Stage	We'll paint the A Stage to a specific color based on your request.
\$200.00	Color Painting Fee - B Stage	We'll paint the B Stage to a specific color based on your request.
\$100.00	Repaint Fee - Any Stage	Ensures your booking has a fresh coat of white on the stage the night before your booking. (Floors are subject to scuffs and discoloration between bookings)
\$65.00	General Cleaning Fee	This Applies to all bookings so we can keep the facilities stocked and clean.
\$135.00	Event Cleaning Fee	This Applies to bookings > 25 individuals so we can keep the facilities stocked and clean.
\$150.00	Smoking Fee	This Applies if your booking requires individuals to smoke on site.

*Additional fees may apply if any damage occurs to the property of Black Pigeon or its affiliates and vendors.

PREFERRED CREW MEMBERS

Please See Below the List of Preferred Crew Members - Freelancers who work with Black Pigeon.

NOTE: Inquire about additional crew needs, our community is ever-growing.

[\[CLICK THIS LINK TO VIEW THE MOST ACCURATE PREFERRED CREW LIST\]](#)



PRODUCTION SUPPLIES INVENTORY

Please See Below the On-Demand Production Supplies Inventory List.

NOTE: Inquire about additional inventory or quantities, we are able to source from other places.

[\[CLICK THIS LINK TO VIEW THE MOST ACCURATE INVENTORY LIST\]](#)

GRIP AND ELECTRIC INVENTORY

Please See Below the On-Demand Grip and Electric Inventory List, Updated Regularly.

NOTE: Inquire about additional inventory or quantities, we are able to source from other places.

[\[CLICK THIS LINK TO VIEW THE MOST ACCURATE INVENTORY LIST\]](#)

CAMERA and SUPPORT INVENTORY

Please See Below the On-Demand Camera Equipment Inventory List, Updated Regularly.

NOTE: Inquire about additional inventory or quantities, we are able to source from other places.

[\[CLICK THIS LINK TO VIEW THE MOST ACCURATE INVENTORY LIST\]](#)

PREFERRED VENDORS



Catering Concepts (by Flo's) - Catering Concepts is partnering with Black Pigeon to be our preferred caterer for craft services or lunch options.



GRAND RAPIDS | DOWNTOWN

Canopy Grand Rapids - Canopy is partnering with Black Pigeon to offer hotel rooms at the following discounts:
> \$125.00 p/night on weekdays
> \$150.00 p/night on weekends



Lantern Coffee Bar & Lounge - Lantern is partnering with Black Pigeon to produce a creator roast (coming soon)



Clark Camera Cinema - Clark Camera is working with Black Pigeon to help provide lighting and camera support packages at tiered pricing to support smaller creatives.